

DIAGRAM OF OF CONNECTIONS FROM TRACK TO SIGNAL FOUNDATION

3 FT. OF SLACK TO BE ALLOWED FOR NEW RAIL AND 8 FT. FOR OLD RAIL. RAIL LESS THAN 3 YRS OLD TO BE CONSIDERED NEW. BENDS IN CABLE TO HAVE AT LEAST AN 8 IN. RADIUS. PORTION OF CABLE RUN OUTSIDE OF TIES TO BE NOT LESS THAN 8 IN. BELOW TOP OF SUBGRADE.

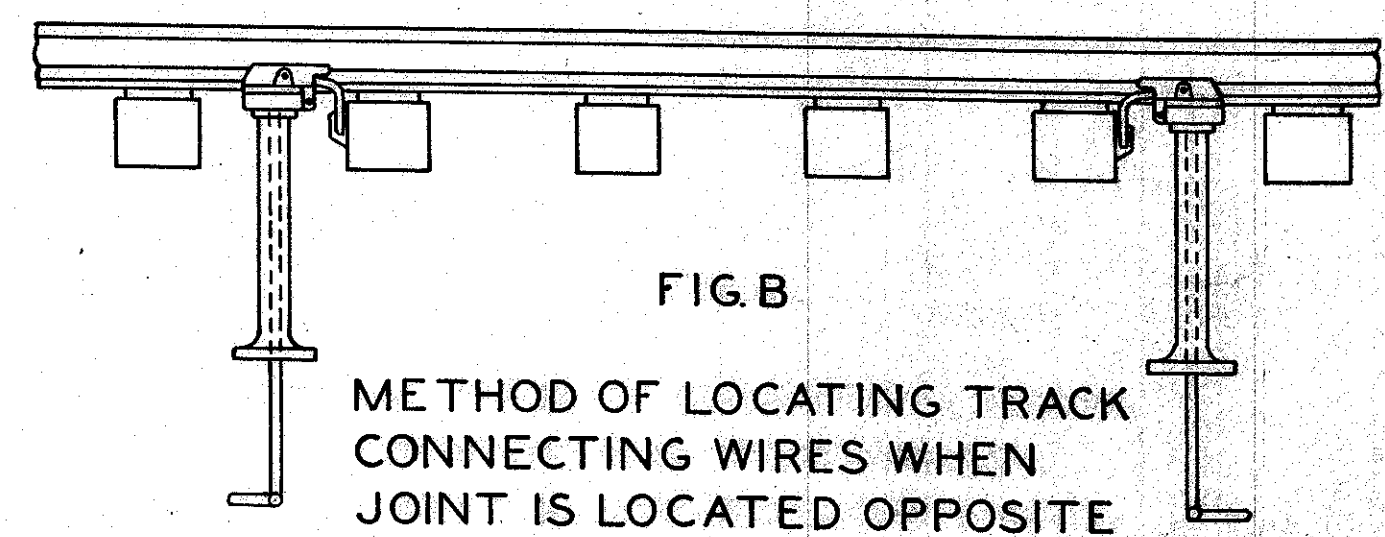


FIG. B
METHOD OF LOCATING TRACK CONNECTING WIRES WHEN JOINT IS LOCATED OPPOSITE THE BOOTLEG

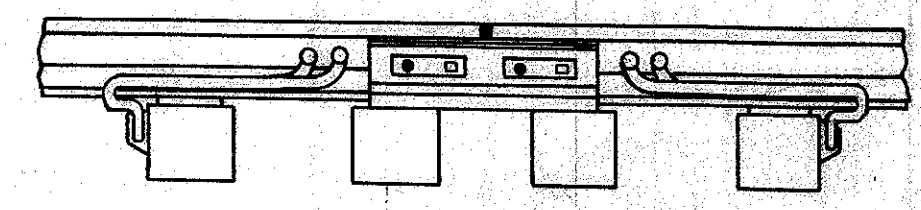
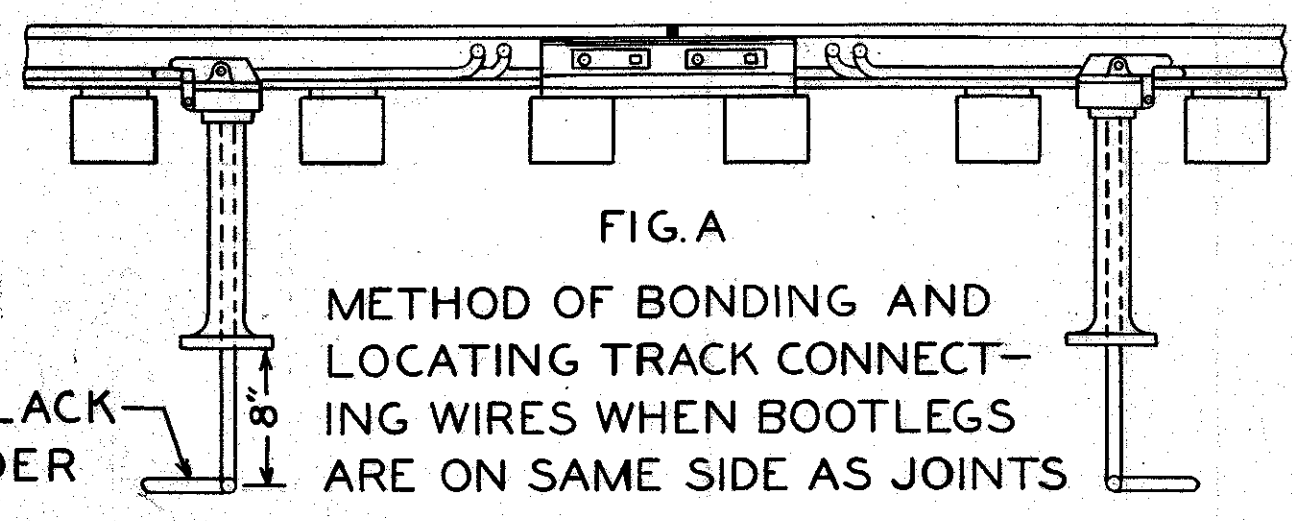
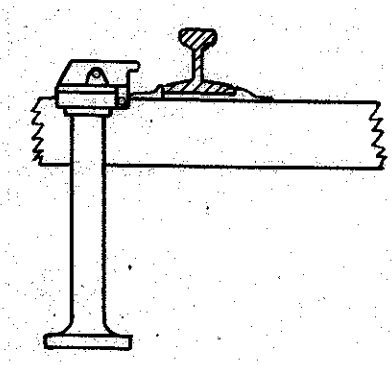


FIG. C
METHOD OF BONDING AND LOCATING TRACK CONNECTING WIRES WHEN JOINT IS LOCATED OPPOSITE THE BOOTLEG



APPROX. 12" OF SLACK TO BE LEFT UNDER EACH BOOTLEG

FIG. A
METHOD OF BONDING AND LOCATING TRACK CONNECTING WIRES WHEN BOOTLEGS ARE ON SAME SIDE AS JOINTS



DETAIL OF BOOTLEG INSTALLATION

SOUTHERN PACIFIC LINES
COMMON STANDARD
TRACK CONNECTIONS
NO SCALE ADOPTED: APR. 10, 1947