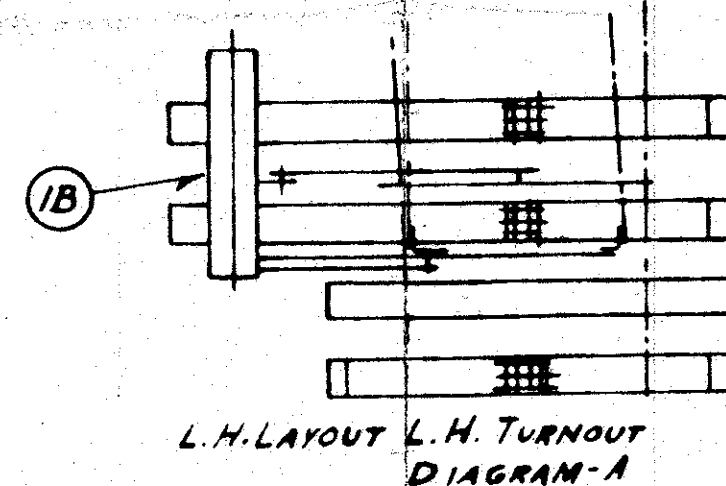
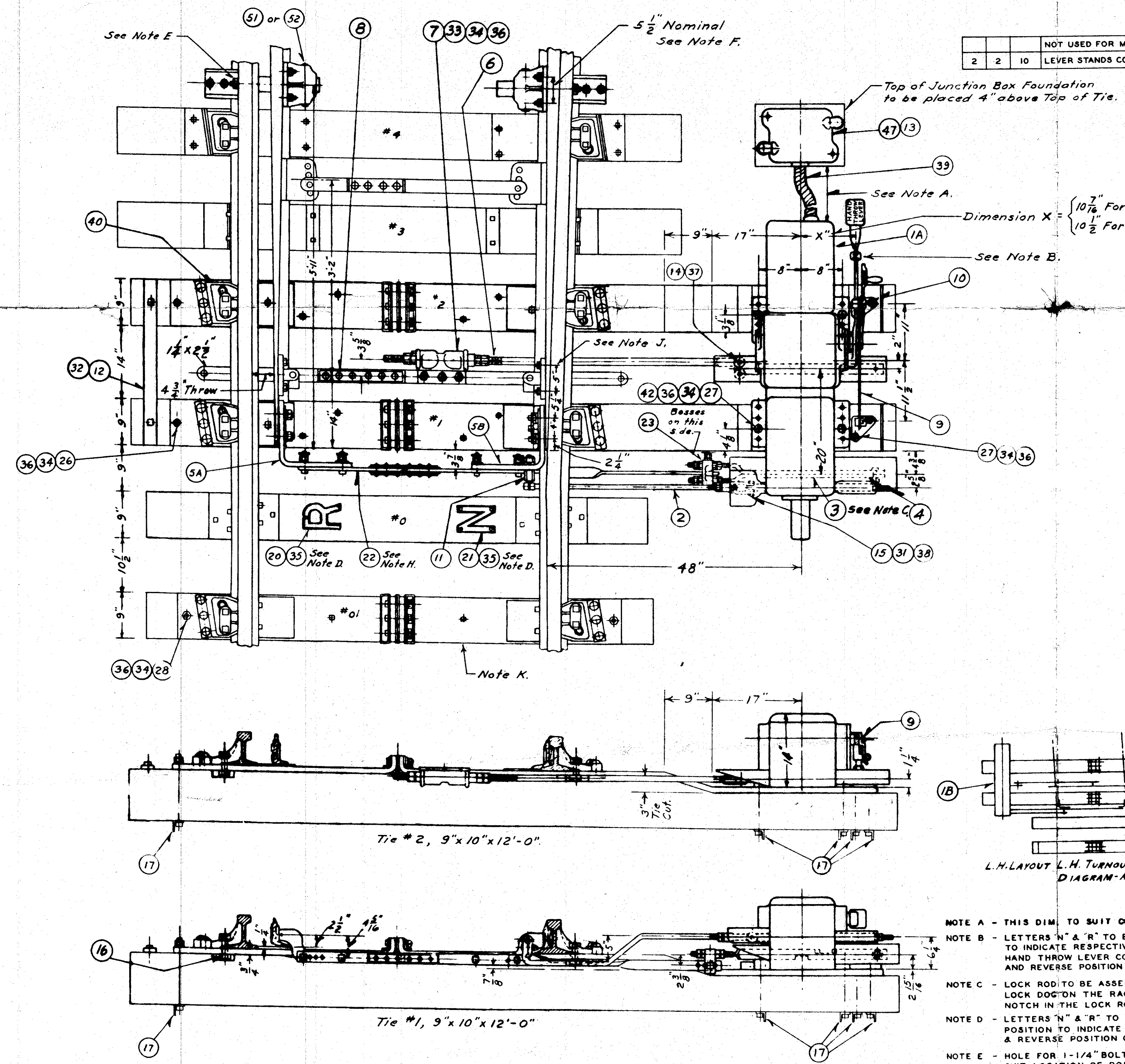


GR.	GR.	ITEM NO.	DESCRIPTION	PC. NO.	DWC.	SH.	GR.	GR.	ITEM NO.	DESCRIPTION	PC. NO.	DWC.	SH.	REVISIONS
1	1	1A	R.H. STYLE M-23A S&L MOV'T. USING L. ROD COVER 242439 - C9190-67.	PER GO.	C9194	22	1	1	1A	R.H. STYLE M-22A S&L MOV'T. USING L. ROD COVER 242439 - C9190-67.	PER GO.	C9194	11	
1	1	1B	L.H. STYLE M-23A S&L MOV'T. USING L. ROD COVER 242439 - C9190-67.	PER GO.	C9194	22	1	1	1B	L.H. STYLE M-22A S&L MOV'T. USING L. ROD COVER 242439 - C9190-67.	PER GO.	C9194	11	
1	1	2	3'-3-1/2" PT. DET. CONN. ROD, COMP.	299599	B10287	116	1	1	2	3'-3-1/2" PT. DET. CONN. ROD, COMP.	299599	B10287	116	
1	1	3	ADJ. LOCK ROD, COMP.	149,866	B8166	258	1	1	3	ADJ. LOCK ROD, COMP.	141759	C8926	8	
1	1	4	POINT DETECTOR BAR COMP. (M-23A)	284475	C9190	81	1	1	4	POINT DETECTOR BAR, COMP. (M-22A)	109940	B12791	9	
1	1	5A	L.H. SWITCH FOOT, COMP.	109941	B12791	9	1	1	5A	L.H. SWITCH FOOT, COMP.	299473	B9801	111	
1	1	5B	R.H. SWITCH FOOT, COMP.	299473	B9801	111	1	1	5B	R.H. SWITCH FOOT, COMP.	194,786	B8060	53	
1	1	6	5'-6" SW. OPER. ROD, COMP.	229933	B7955	366	1	1	6	5'-6" SW. OPER. ROD, COMP.	259201	C9190	74	
1	1	7	WEATHERPROOF SW. PT. ADJ., COMP.	230545	C9190	49	1	1	7	WEATHERPROOF SW. PT. ADJ., COMP.	211,489	8091	99	
1	1	8	INS. SWITCH ROD, COMP.	97212	B8613	24	1	1	8	INS. SWITCH ROD, COMP.	208,537	C9180	29	
1	1	9	HASP CONN. ROD (M-22A)	22589	B10336	1	1	1	9	HASP CONN. ROD (M-22A)	159,007	8277	124	
2	2	10	LEVER STANDS COMP. (M-23A)	286609	C9190	99	2	2	10	LEVER STANDS, COMP. (M-22A)	229,817	9999	1792	
1	1	11	STUD, COMP.				1	1	11	STUD, COMP.	CE 10147	11		
1	1	12	2' - 8" TIE STRAP				1	1	12	2' - 8" TIE STRAP				
1	1	13	JUNCTION BOX, COMP.				1	1	13	JUNCTION BOX, COMP.				
1	1	14	7/8" X 2'-1/4" PIN				1	1	14	7/8" X 2'-1/4" PIN				
1	1	15	3/8" X 2'-9/8" HEX. HD. BOLT				1	1	15	3/8" X 2'-9/8" HEX. HD. BOLT				
6	6	16	DOUBLE NUTS				6	6	16	DOUBLE NUTS				
12	12	17	ANGLE IRON WASHER				12	12	17	ANGLE IRON WASHER				
1	1	20	LETTER "R"	151,301	B9513	11	1	1	20	LETTER "R"	66315	B9513	4	
1	1	21	LETTER "M"	299485	B8182	401	1	1	21	LETTER "M"	291521	B8060	25	
1	1	22	INS. FRONT ROD BAR, COMP.				1	1	22	INS. FRONT ROD BAR, COMP.				
1	1	23	LUG, COMP.				1	1	23	LUG, COMP.				
2	2	26	3/4" X 12'-3" SQ. HD. MACH. BOLTS				2	2	26	3/4" X 12'-3" SQ. HD. MACH. BOLTS				
8	8	27	3/4" X 11'-1/2" SQ. HD. MACH. BOLTS				8	8	27	3/4" X 11'-1/2" SQ. HD. MACH. BOLTS				
2	2	28	3/4" X 9'-1/2" SQ. HD. MACH. BOLTS				2	2	28	3/4" X 9'-1/2" SQ. HD. MACH. BOLTS				
1	1	31	5/8" SEMI-FINISHED SLOTTED HEX. NUTS.				1	1	31	5/8" SEMI-FINISHED SLOTTED HEX. NUTS.				
2	2	32	3/4" X 6" LAG SCREWS				2	2	32	3/4" X 6" LAG SCREWS				
3	3	33	3/4" X 3" SQ. HD. S. MACH. BOLTS				3	3	33	3/4" X 3" SQ. HD. S. MACH. BOLTS				
15	15	34	3/4" HEX. NUTS, H.P.				15	15	34	3/4" HEX. NUTS, H.P.				
7	7	35	#14 X 2'-1/2" FLAT HD. S. WOOD SCREWS (TIN PL.)				7	7	35	#14 X 2'-1/2" FLAT HD. S. WOOD SCREWS (TIN PL.)				
15	15	36	13/16" HIGHPOWER LOCK WASHERS				15	15	36	13/16" HIGHPOWER LOCK WASHERS				
1	1	37	3/16" X 1'-1/2" S. COTTER (TIN PL.)				1	1	37	3/16" X 1'-1/2" S. COTTER (TIN PL.)				
1	1	38	1/8" X 1'-1/4" S. COTTER (TIN PL.)				1	1	38	1/8" X 1'-1/4" S. COTTER (TIN PL.)				
1	1	39	PC. 2" FLEX. S. CONDUIT, 2'-3" LONG				1	1	39	PC. 2" FLEX. S. CONDUIT, 2'-3" LONG				
6	6	40	RACOR ADJ. RAIL BRACES #3131 RAMAPO AJAX DWG. F-4793 INCLUDES 7/8" X 4'-1/4" H.C. H.T. SQ. HD. BOLTS & 7/8" HI-POWER LOCK WASHERS.				6	6	40	RACOR ADJ. RAIL BRACES #3131 RAMAPO AJAX DWG. F-4793 INCLUDES 7/8" X 4'-1/4" H.C. H.T. SQ. HD. BOLTS & 7/8" HI-POWER LOCK WASHERS.				
4	4	42	3/4" STD. S. PLATE WASHERS.				4	4	42	3/4" STD. S. PLATE WASHERS.				
1	1	47	CONCRETE FOUNDATION FOR JUNCTION BOX	CE 10615	133F		1	1	47	CONCRETE FOUNDATION FOR JUNCTION BOX	CE 10615	133F		
2	2	51	ROLLER BEARINGS S.B.M. 242,723 C16600			3	2	2	51	ROLLER BEARINGS S.B.M. 242,723 C16600			3	
2	2	52	ROLLER BEARINGS S.B.M. 231,923 C16600			3	2	2	52	ROLLER BEARINGS S.B.M. 231,923 C16600			3	



- NOTE A - THIS DIM. TO SUIT CONDITIONS IN FIELD.
- NOTE B - LETTERS "N" & "R" TO BE REASSEMBLED IF NECESSARY TO INDICATE RESPECTIVELY THE POSITION OF THE HAND THROW LEVER CORRESPONDING TO THE NORMAL AND REVERSE POSITION OF THE SWITCH POINTS.
- NOTE C - LOCK ROD TO BE ASSEMBLED IN MOV'T. SO THAT THE LOCK DOG ON THE RACK WILL ENTER THE NARROW NOTCH IN THE LOCK ROD FIRST.
- NOTE D - LETTERS "N" & "R" TO BE PLACED IN THE PROPER POSITION TO INDICATE RESPECTIVELY THE NORMAL & REVERSE POSITION OF THE SWITCH.
- NOTE E - HOLE FOR 1-1/4" BOLT, DRILLED IN STOCK RAIL TO SUIT LOCATION OF ROLLER BEARINGS.
- NOTE F - (2) 3/4" BOLTS, HOLES DRILLED 2-5/8" FROM BASE OF SW. POINT FOR 112# R.E. & 113# H.F. RAIL OR (2) 1/4" BOLTS, HOLES DRILLED 3-1/4" FROM BASE OF 131# R.E. OR 132# H.F. RAIL. SLOTTED HOLES IN ROLLER BEARING CASTING TO GIVE 6-1/8" MAX. - 5" MIN. CENTER DISTANCE.
- NOTE H - FRONT ROD SUITABLE FOR 1/2" OR 1-1/4" REINFORCING BARS (GAGE SIDE).
- NOTE J - FOR SWITCH POINT DRILLING SEE C.E. 10147, SH. 7, FIG. 1.
- NOTE K - FOR DETAILS OF NO. 01 GAGE PLATE AND TIE USING ADJUSTABLE RAIL BRACE ITEM 40, SEE C.E. 10147, SH. 8.
- NOTE L - FOR 90# ARA-A AND 110# R.E. RAIL USE CAST STEEL RAIL BRACES, SEE M.W.D. 7373, SH. 1.

FOR DETAILS OF INSULATED GAGE PLATES SEE FOLLOWING SHEETS.

	112# R.E. AND 113# H.F.	131# R.E. AND 132# H.F.	110# R.E.	90# ARA-A
16'-6" POINTS				
RHLO - RHTO	SH. 13A	SH. 13E	13A-1	13A-2
RHLO - LHTO	" 13B	" 13F		
LHLO - RHTO	" 13C	" 13G		
LHLO - LHTO	" 13D	" 13H	13D-1	13D-2
24'-0" POINTS				
RHLO - RHTO	" 13J	" 13N		
RHLO - LHTO	" 13K	" 13P		
LHLO - RHTO	" 13L	" 13Q		
LHLO - LHTO	" 13M	" 13R		
30'-0" POINTS				
RHLO - RHTO	" 13S	" 13W		
RHLO - LHTO	" 13T	" 13X		
LHLO - RHTO	" 13U	" 13Y		
LHLO - LHTO	" 13V	" 13Z		
TIE FRAMING	" 14	" 14		14A

SOUTHERN PACIFIC COMPANY  
PACIFIC LINES  
LOW VOLTAGE SWITCH LAYOUT  
STYLE M-22A & M-23A SWITCH MOVEMENT  
SCALE: 1"=1'-0" 7-2-51