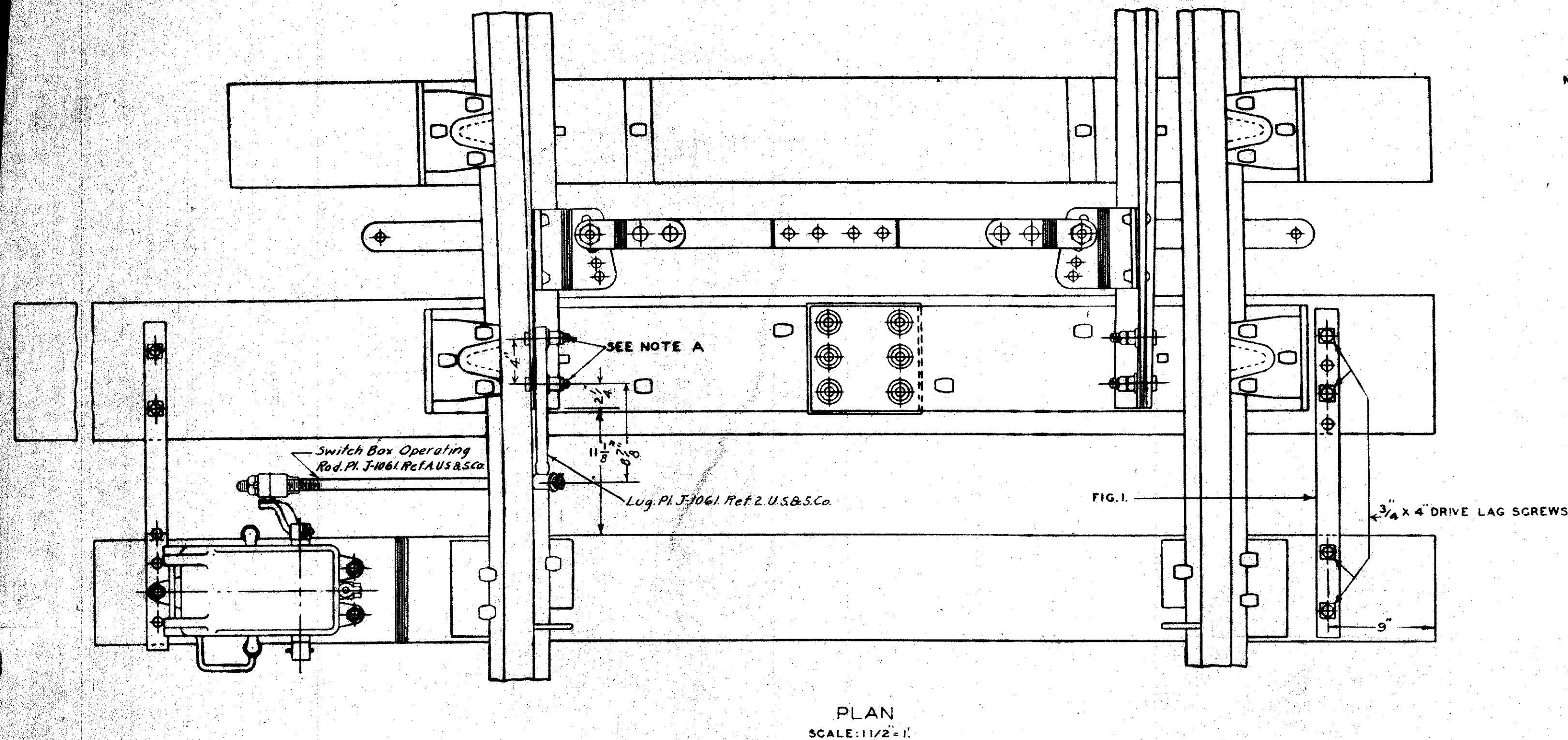


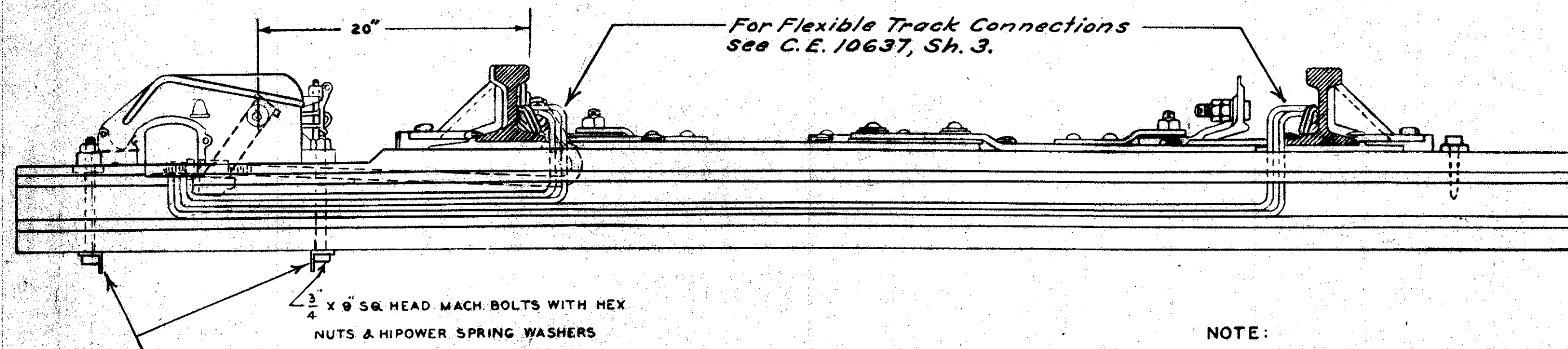
REVISIONS
9-15-52. Angle Iron Fig. 2 removed. Added Angle Iron Washers. L&B

NOTE A.
FOR 16'-6" SWITCH POINTS USE $\frac{1}{2}$ " X $3\frac{1}{2}$ " BOLT, HEAT TREATED,
WITH SQUARE HEAD $\frac{3}{8}$ " THICK AND $2\frac{1}{2}$ " OF
STANDARD THREAD. 1 HI-POWER SPRING WASHER,
1 STANDARD HEX NUT AND 1 SQUARE GRIP NUT LOCK.
FOR 24'-6" OR 30'-0" SWITCH POINTS USE BOLTS
SIMILAR TO ABOVE EXCEPT $4\frac{1}{2}$ " LONG.



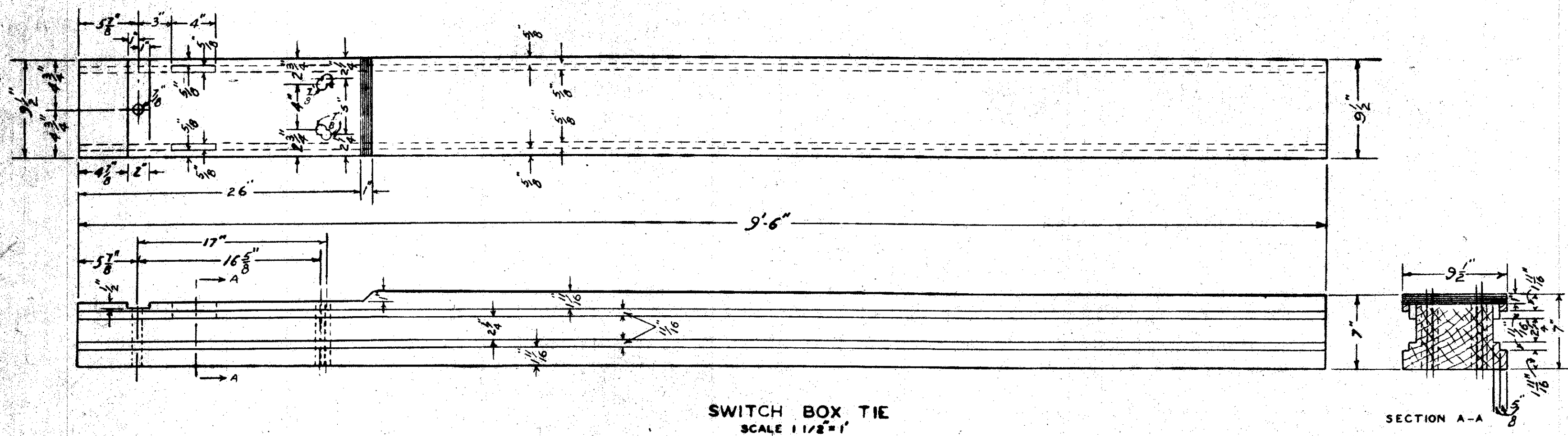
PLAN
SCALE: 1 1/2" = 1'

MAKE DOWNSET IN THE SPACING STRAP
WHEN INSTALLING, SO THAT IT WILL COME
UNDER SWITCH CIRCUIT CONTROLLER.



APPLICATION OF SWITCH BOX OPERATING ROD
SCALE: 1 1/2" = 1'
ELEVATION

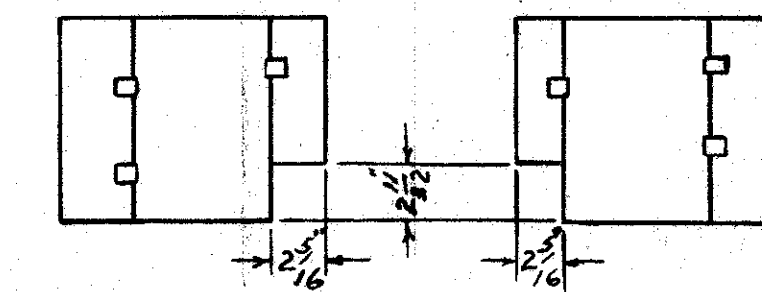
NOTE:
LAYOUT AND TIE AS SHOWN TO BE USED
FOR LOCATIONS WHERE SHUNT WIRES TO
TRACK ARE USED.
AT LOCATIONS USING SS CONTROL, ALSO
SIDING SWITCH OF CROSSOVER USE LAYOUT
AND TIE AS SHOWN ON SHEET 1A.



SWITCH BOX TIE
SCALE: 1 1/2" = 1'

SECTION A-A

NOTE -
TIE SHALL BE MADE OF DOUGLAS FIR.
AFTER FRAMING SHALL BE CREOSOTED.
DRILLING IS SHOWN FOR USE WITH EITHER
STYLE U-3 OR U-5 SWITCH CIRCUIT CONTROLLER.
GROOVES SHALL BE PAINTED WITH ONE COAT OF
ACID PROOF PAINT BEFORE INSTALLING WIRES.
FURNISH WITH EACH TIE 8'-6" OF CAPPING OR
CREOSOTED FIR 1 X 3 1/2" NAILED LIGHTLY IN PLACE
IN EACH GROOVE.



TIE PLATE WITH CORNER CUT AWAY TO
ALLOW SPACE FOR DRILLING HOLES IN
TIE TO INSTALL WIRES.
SCALE: 1 1/2" = 1'-0"

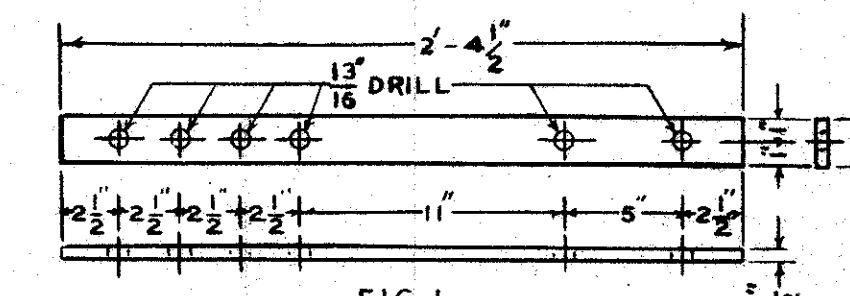


FIG. 1.
TIE SPACING STRAP
WROT IRON, 2 REQUIRED.
SCALE: 1 1/2" = 1'-0"

SOUTHERN PACIFIC COMPANY
PACIFIC LINES
STANDARDS
CENTRALIZED TRAFFIC CONTROL
SHUNT WIRED SWITCH ASSEMBLY
SCALE AS NOTED 10-26-43