

| REVISIONS |
|---|
| 8-6-47 Redrawn A.S.H. |
| 3-2-48 Foundation reference A.S.H. |

Note: - Adjust Indicator Heads
for maximum view.

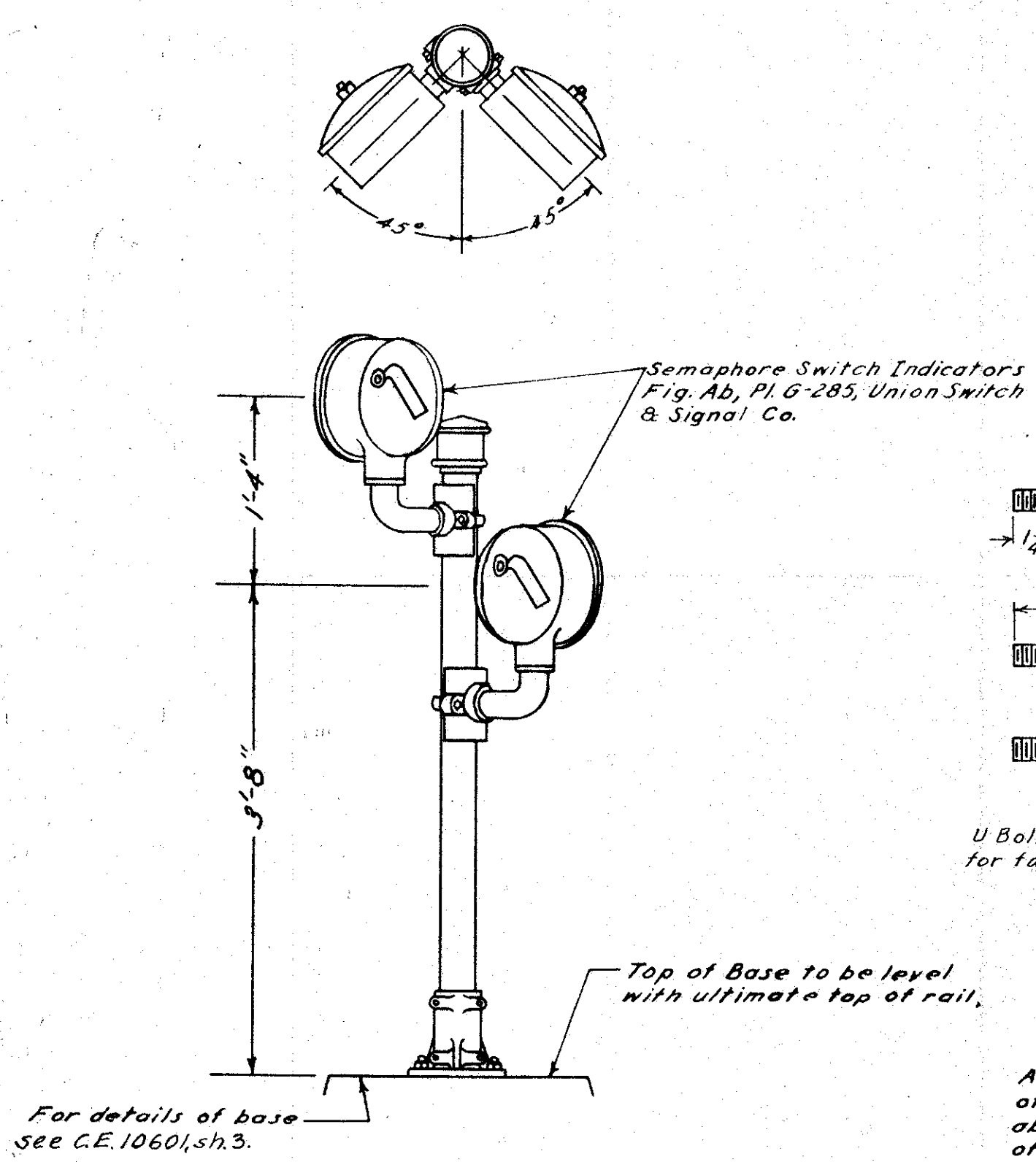


FIG. 1 - TRACK CAR INDICATORS AT INSTRUMENT HOUSE

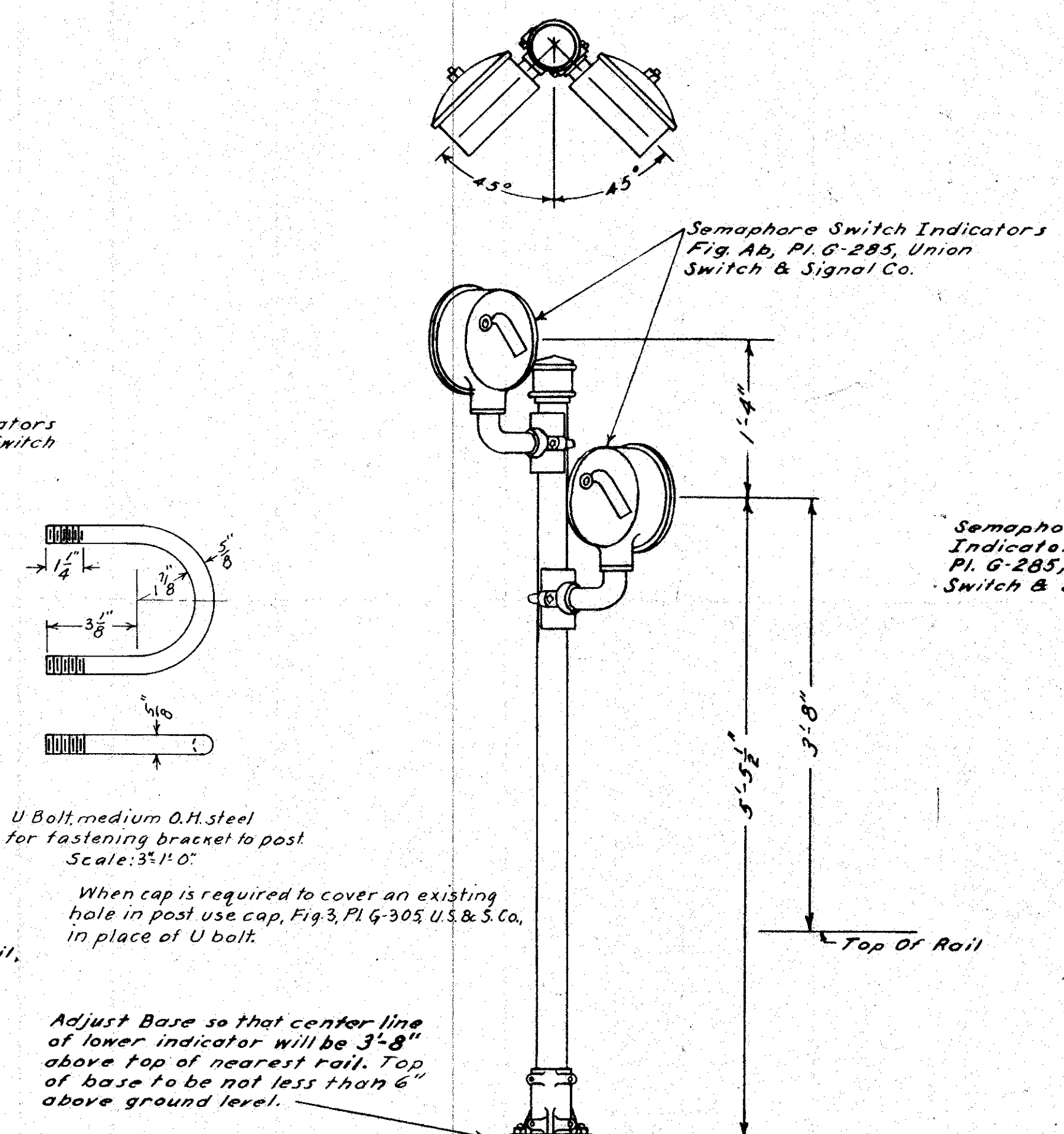


FIG. 1A - TRACK CAR INDICATORS WITHOUT CABLE POST

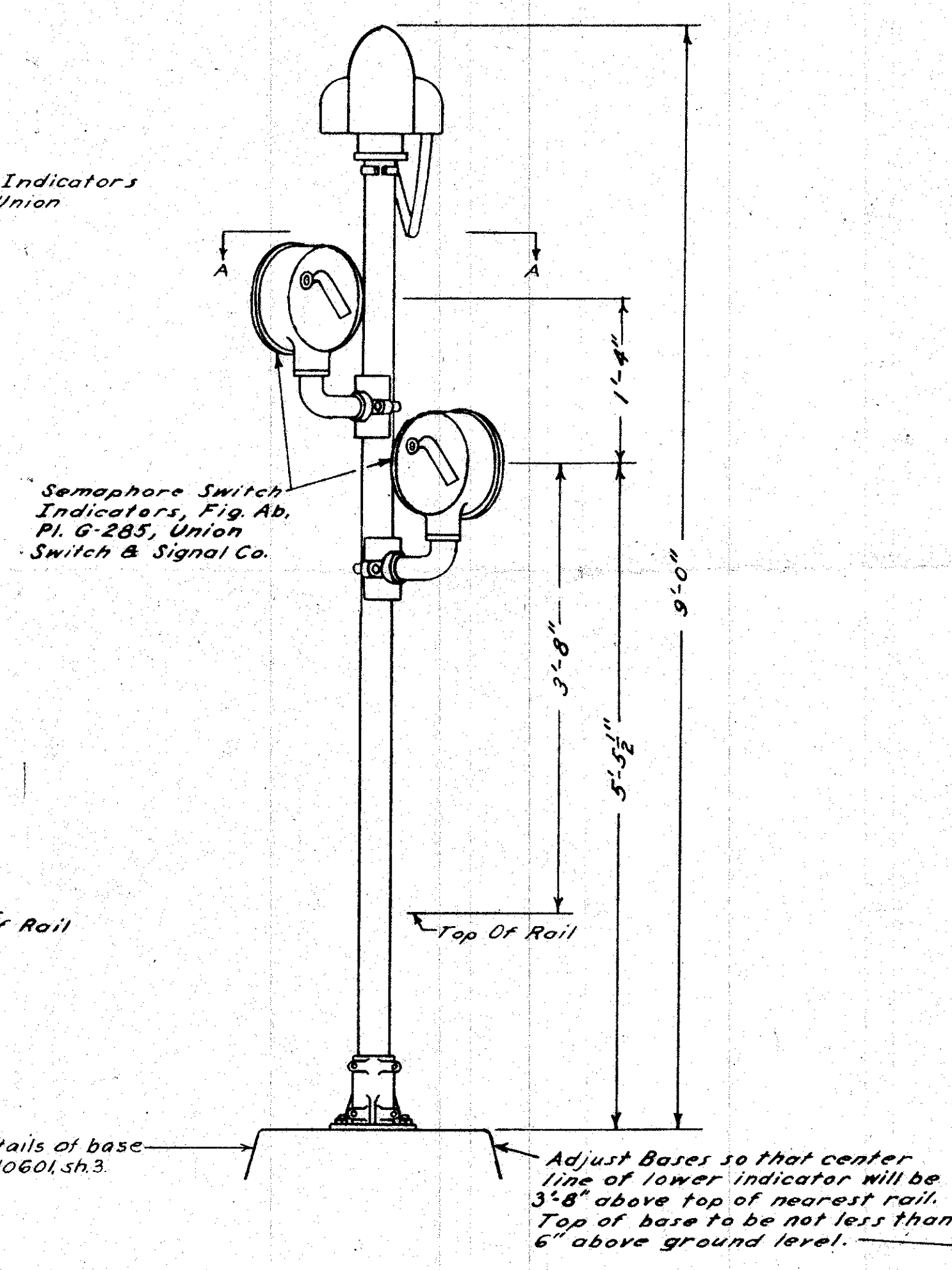


FIG. 2 - TRACK CAR INDICATORS WITH CABLE POST

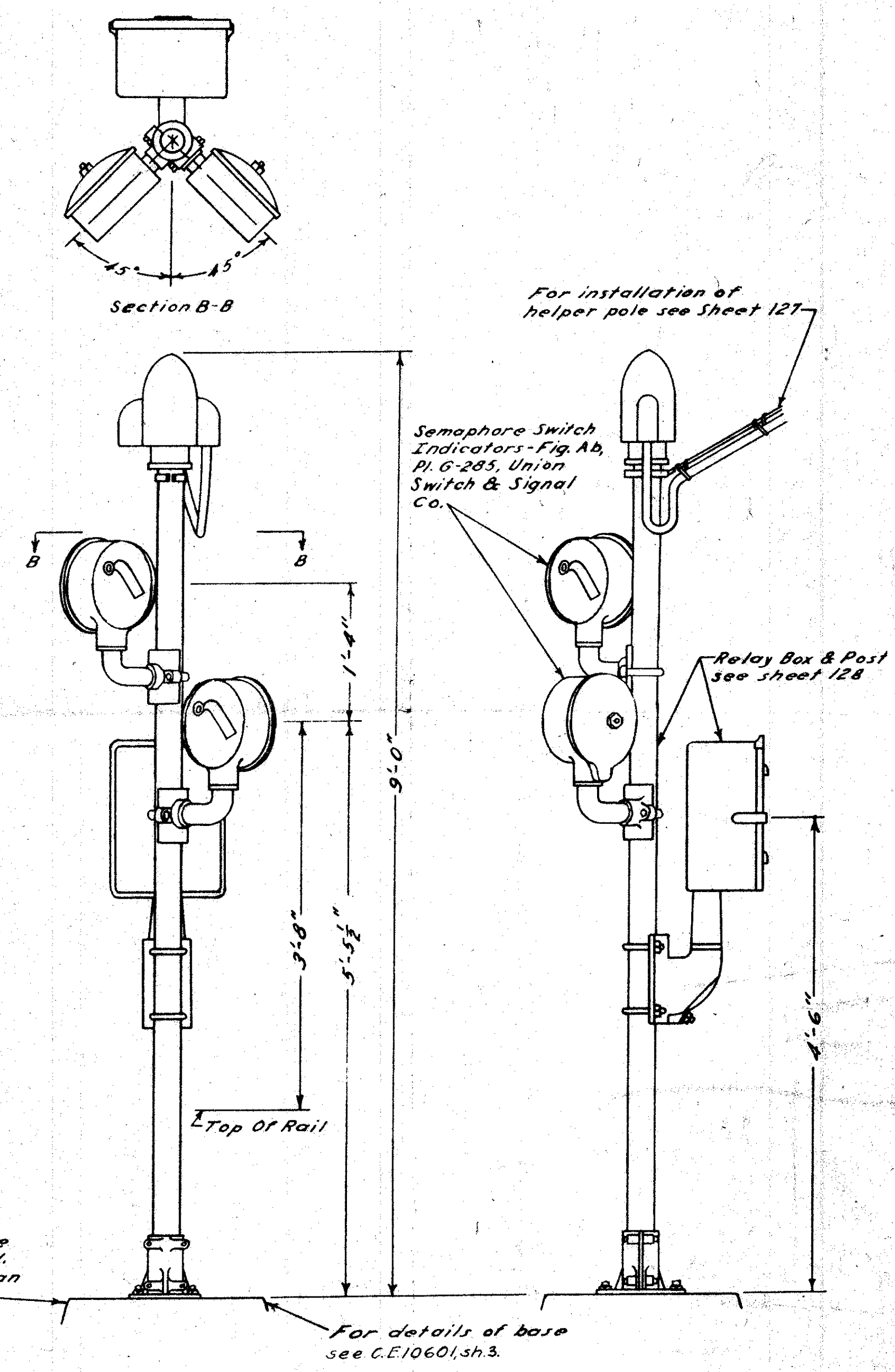


FIG. 3 - TRACK CAR INDICATORS WITH CABLE POST AND RELAY BOX

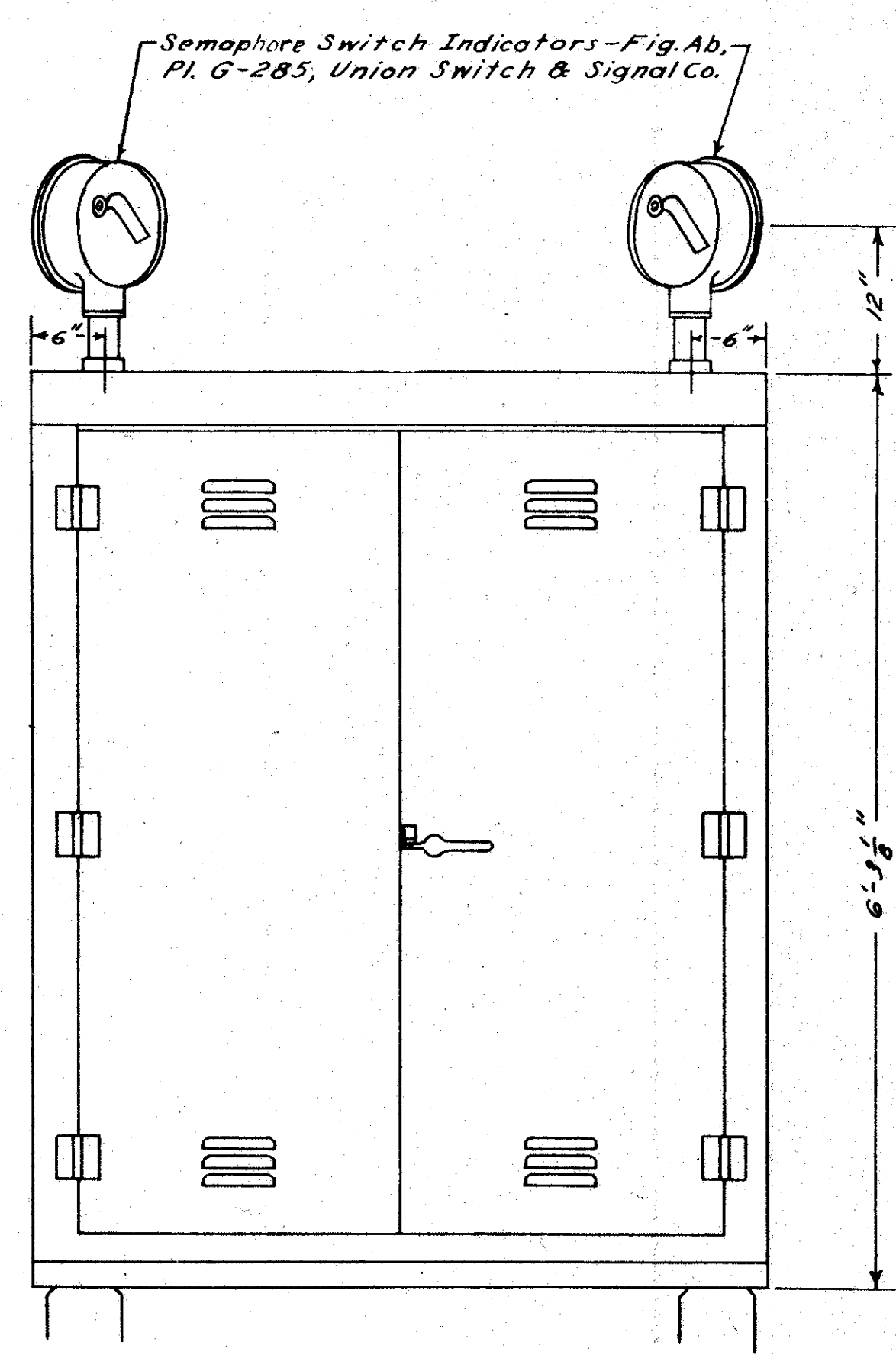


FIG. 4 - TRACK CAR INDICATORS MOUNTED ON INSTRUMENT CASE

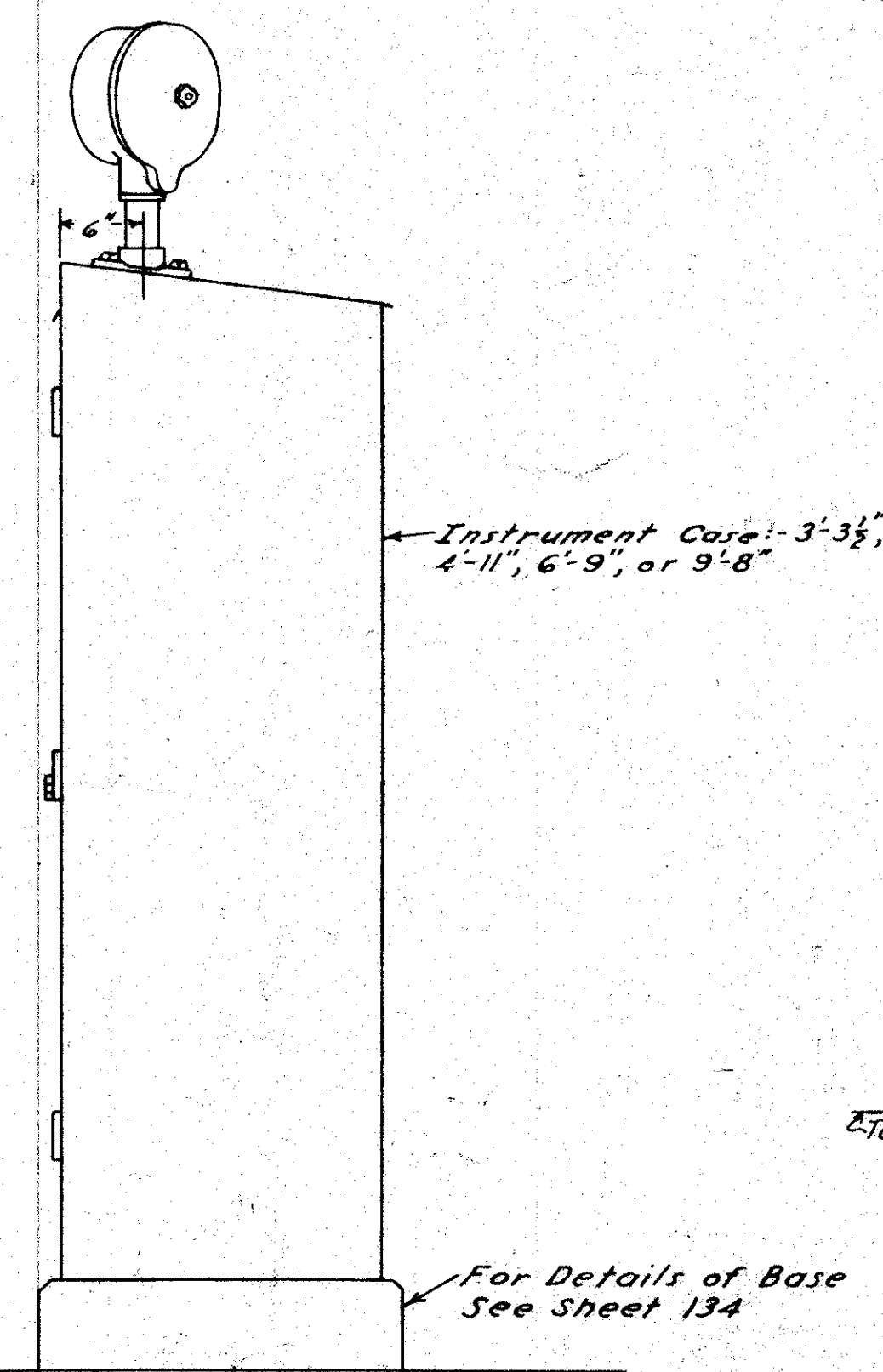


FIG. 5 - TRACK CAR INDICATORS ON WOOD RELAY POST

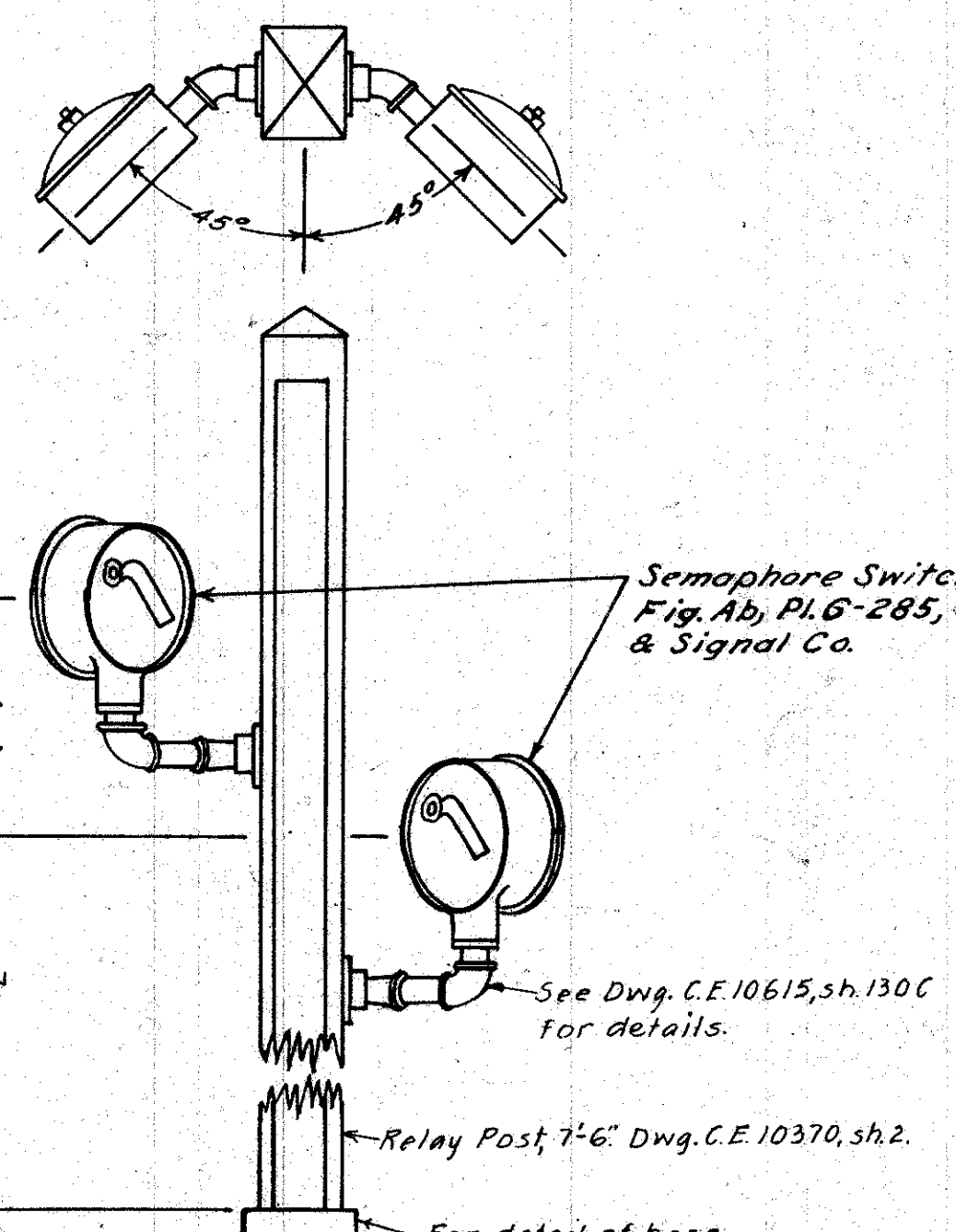


FIG. 6 - TRACK CAR INDICATORS ON DOUBLE STYLE B INSTRUMENT CASE

SOUTHERN PACIFIC COMPANY
PACIFIC LINES
TRACK CAR INDICATORS
SCALE: 1"=1'-0" 6-25-41